
BONNIE
AND BAG



BONNIE AND BAG

QUI SOMMES NOUS ?

Bonnie & Bag is a young brand created in 2012 with the feeling that many brands were putting style before quality. For us luxury should be going back to the essential: discretion, solidity and simplicity, for now and forever. We are looking to offer a collection of made-to-last essentials of very high quality and timeless design for all women, no matter their age or style.

We named the brand Bonnie & Bag as a hint to Bonnie Parker: a free, audacious and stylish woman, always on the road. We create sturdy, roomy, practical and timeless bags that you can carry all day long no matter what happens, bags which are perfect to get away for an adventure or a few days. A Bonnie & Bag tote bag is the perfect mate to escape, the ideal ally for a nomadic lifestyle.





In a world which is moving faster than ever and where we throw away as much as we buy, we feel the need to go back to the essential.

We are trying to create new wardrobe basics which will be durable and will last for several generations, bags that will follow you all along your adventures.

ÉLOGE DE L'ESSENTIEL

Free and confident, the Bonnie and Bag woman is sensitive to Beauty and careful about the quality of the products she selects. She makes researches to find the right pieces and cares as much about style than practical aspects. Her accessories are simple and elegant, chic and practical, so they can pair with each aspect of her life.



BONNIE AND BAG

COLLECTION PRINTEMPS/ÉTÉ 2019



PETIT PANIER

A small perforated leather bag like a summer basket which can be used all year-long. Inside of it, you can find a removable linen and leather pouch with a zipper which can keep your valuables safe and can be converted into a cross-body bag.

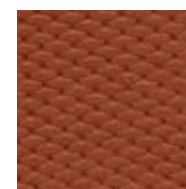
Dimensions: 21 x 24 x 15 cm

Dimensions of the linen pouch: 20 x 22 x 12 cm

Handbag: 100% perforated full grain calfskin leather, unlined. Multifunction removable cross-body strap which can be used on the leather bag or the linen pouch.

Linen pouch: 100% linen, bottom 100% full grain calfskin leather, 100% black cotton lining, closes with a zipper.

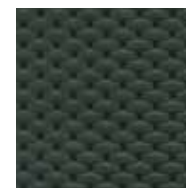
AVAILABLE COLOURS



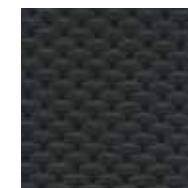
Brique



Marine



Sapin



Noir

BONNIE AND BAG

BALADE

A classic, timeless and versatile, which can be a dressy clutch or a practical cross-body bag. A must-have for every day.

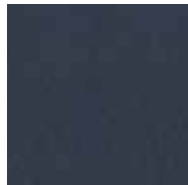
Dimensions: 27 x 19 x 5,5 cm
100% full grain calfskin leather, unlined.
Closes with a zipper
Removable cross-body strap



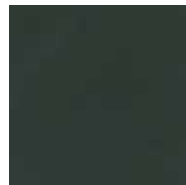
AVAILABLE COLOURS



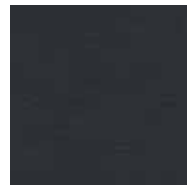
Brique



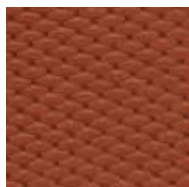
Marine



Sapin



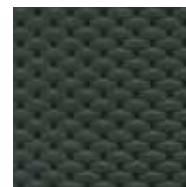
Noir



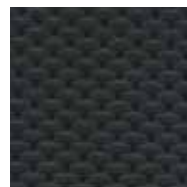
Brique



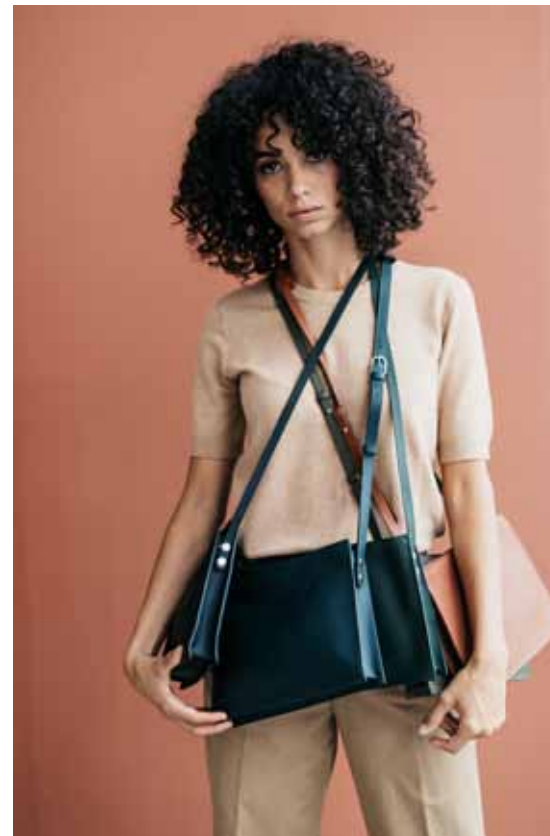
Marine



Sapin



Noir



BONNIE AND BAG

COLLECTION PRINTEMPS/ÉTÉ 2019



ÉCHAPPÉE

A fanny pack, a cross-body, a belt, a clutch, all together but always with style.

100% full grain calfskin leather, unlined.

Closes with a zipper

Removable cross-body strap

Wide belt 6 x 90 cm for waist sizes 70 to 85 cm

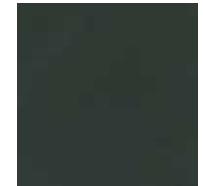
AVAILABLE COLOURS



Brique



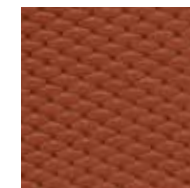
Marine



Sapin



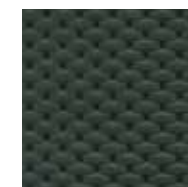
Noir



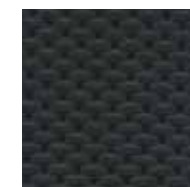
Brique



Marine



Sapin



Noir

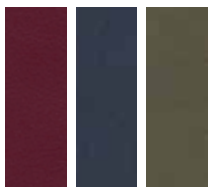
PORTE-FEUILLE

When basic meets practical, all in a discreetly chic shape and size.

Dimensions: 10 x 11 cm
100% full grain calfskin leather, unlined.
Zippered pocket for cash
4 card slots
2 bill slots
Closes with a snap



AVAILABLE COLOURS



Bordeaux w/ inside Marine/Khaki



Sapin w/ inside Khaki/Bordeaux



Noir w/ inside Marine/Sapin



BONNIE AND BAG



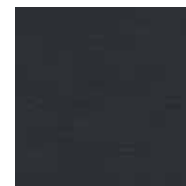
CASH

Le porte-clef qui garde la monnaie.

Dimensions : 10 x 7 cm
100% cuir de vachette pleine fleur, non doublé
Fermeture à pression
Dragonne porte-clef qui s'attache aux anses de sac pour le retrouver facilement



Brique



Noir

BONNIE AND BAG

COLLECTION PRINTEMPS/ÉTÉ 2019

CABAS LIN

A timeless, practical linen tote, in 2 different sizes so there will always be the right one for you.

Large linen tote bag : 40 x 54 x 22 cm

Small linen tote bag : 35 x 44 x 18 cm

100% thick linen, 100% black cotton lining

Handles 100% full grain calfskin leather

2 inside pockets (open)

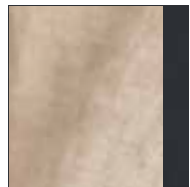
AVAILABLE COLOURS



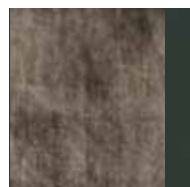
Paprika/Brique



Marine/Marine



Lin/Noir



Militaire/Sapin



BONNIE AND BAG



ESCAPADE LIN

Our famous bucket bag, in its summer linen and leather edition. Can be worn on the shoulder or cross body. Available in 2 sizes.

Large linen Escapade : 30 x 24 x 9 cm

Small linen Escapade : 23 x 21 x 9 cm

100% thick linen, 100% black cotton lining

Bottom 100% full grain calskin leather (black)

Removable short handle 100% full grain calskin leather (black)

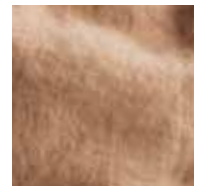
Removable cross-body strap 100% full grain calskin leather (black)

2 inside pochets (open)

AVAILABLE COLOURS



Curry



Poudre



Anthracite



Jade

BONNIE AND BAG

NOOS COLLECTION



CABAS CUIR

The definition of timeless. A practical and simple design which goes through trends and seasons without a wrinkle. A basic. Comes in 2 different sizes.

Leather tote bag 24h Évasion : 40 x 40 x 15 cm

Leather tote bag 12h Braquage : 35 x 35 x 15 cm

100% full grain leather, unlined

Closes with a snap

Removable clutch included size 21 x 14 x 1 cm

Removable key ring included

AVAILABLE COLOURS



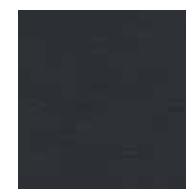
Brique



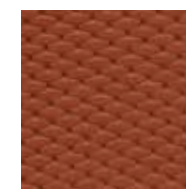
Sapin



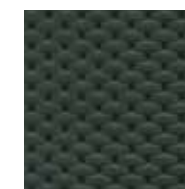
Marine



Noir



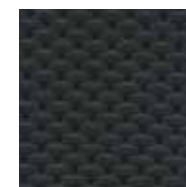
Brique



Sapin



Marine



Noir

BONNIE AND BAG



ESCAPADE CUIR

Our best-selling leather bucket bag which can be worn on the shoulder or cross-body, in its leather edition. Available in 2 sizes.

Escapade : 32 x 26 x 13 cm
Small Escapade : 24 x 21 x 13 cm

100% full grain calfskin leather 1 side smooth, 1 side perforated, unlined
Closes with a magnet
Removable short handle 100% full grain calfskin leather
Removable cross-body strap to tie 100% full grain calfskin leather
2 inside leather pochets (open)

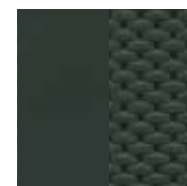
COLORIS DISPONIBLES



Brique



Marine



Sapin



Noir

BONNIE AND BAG

NOOS COLLECTION



SAC EN LIN

A classic, multifunction linen tote bag which can fit the beach as well as the city.

Dimensions : 35 x 35 x 13 cm
100% linen, 100% black cotton lining
Handles 100% full grain calfskin leather
2 inside pockets (open)

AVAILABLE COLOURS



Tomette



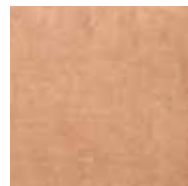
Café Noir



Marine



Vison



Sesame



BONNIE AND BAG

CLYDE

When structure, refinement and practicability meet. A sophisticated bag, not too far from luxury.

Dimensions : 18 x 24 x 7 cm
100%full grain calfskin leather
Leather and black cotton lining
Closes with a zipper + magnet
Inside zippered pocket
Adjustable cross-body strap

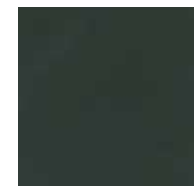
AVAILABLE COLOURS



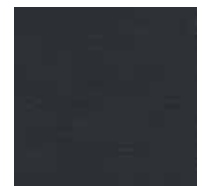
Brique



Marine



Sapin



Noir



BONNIE AND BAG

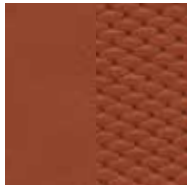
NOOS COLLECTION

FUGUE

Fanny pack or cross-body. Understated, timeless and easy to wear.

Dimensions : 21 x 13 x 3 cm
100% full grain calfskin leather
Lining 100% black cotton
Closes with zipper
Adjustable cross-body strap
Adjustable belt

AVAILABLE COLOURS



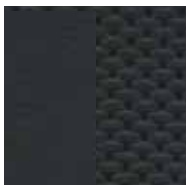
Brique



Marine



Sapin



Noir



BONNIE AND BAG

ESCARCELLE

The “best friend”, purse and clutch at the same time.

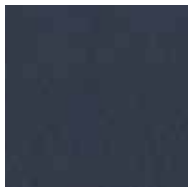
Dimensions : 20 X 12 X 4 cm
100% full grain calfskin leather
Lining 100% black cotton
6 card slots
Inside zippered pocket for change
Closes with a snap



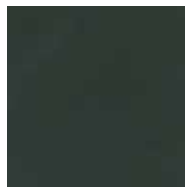
AVAILABLE COLOURS



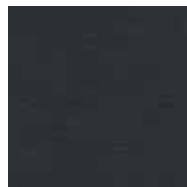
Brique



Marine



Sapin



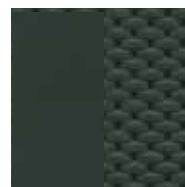
Noir



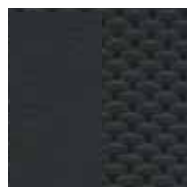
Brique



Marine



Sapin



Noir



BONNIE AND BAG

NOOS COLLECTION



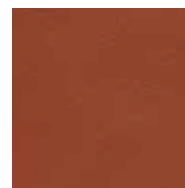
VADROUILLE

Whether you carry it alone or put it inside a bag, the Vadrouille laptop bag remains a daily essential.

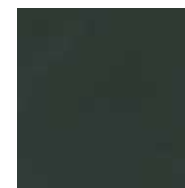
Dimensions : 27 x 23 x 2 cm
100% full grain calfskin leather
100% black cotton lining
Closes with a zipper



AVAILABLE COLOURS



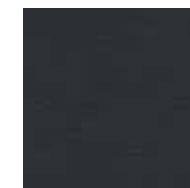
Brique



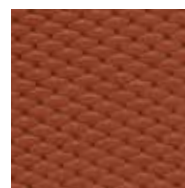
Sapin



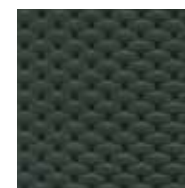
Marine



Noir



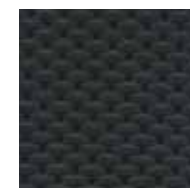
Brique



Sapin



Marine



Noir



BONNIE AND BAG

PETITES POCHETTES

Practicability at its best. classic clutches which can be attached everywhere, so you never loose anything.

Revolver Clutch : 21 x 14 x 1 cm
100% full grain calfskin leather
100% black cotton lining
Closes with a zipper
Handle with a snap

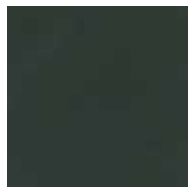
Pétard purse : 15 x 10 x 1 cm
100% full grain calfskin leather
Unlined
Closes with a zipper



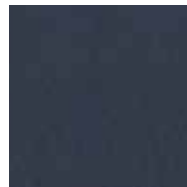
AVAILABLE COLOURS



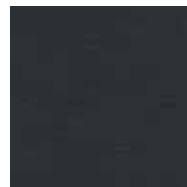
Brique



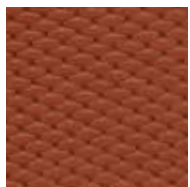
Sapin



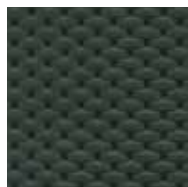
Marine



Noir



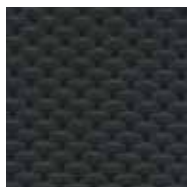
Brique



Sapin



Marine



Noir





BONNIE
AND BAG

BONNIE AND BAG SARL
La Ligne, 86260 Angles sur l'Anglin
hello@bonnieandbag.fr
www.bonnieandbag.fr